

## New R32 Estia WIFI Interface

**TOSHIBA** are pleased to confirm that the R32 Estia WIFI Interface will be released to join the Estia line-up.

### 1. Model Name

Accessory	Description
HWS-IWF0010UP-E	Toshiba Home AC Control Wireless Interface



### 2. Connectable Units

Wall Mounted Hydro	All-in-One Hydro
HWT-601XWHM3W-E	HWT-601F21SM3W-E
HWT-601XWHT6W-E	HWT-601F21ST6W-E
HWT-1101XWHM3W-E	HWT-1101F21SM3W-E
HWT-1101XWHT6W-E	HWT-1101F21ST6W-E
HWT-101XWHT9W-E	HWT-1101F21ST9W-E
<b>Smart device application</b>	HWT-1101F21MM3W-E
iOS 9.0 or later iPhone or iPad	HWT-1101F21MT6W-E
Android 5.0 or later Android phone or tablet	HWT-1101F21MT9W-E



**ESTIA**

## 5. Features & Specifications

### Wireless Adapter Specification

Dimension(WxLxH)	28mm x 120mm x 120mm
Connector length	Max. from Hydro unit 50m.
Net Weight	0.13 kg.
Operating Temperature	0-50°C
Power input	from Hydro unit via A+B line
Power consumption	0.6W
Body Material	ABS (Acrylonitrile Butadiene Styrene) (Flame retardant grade UL94-HB)
VVFi bands	2.4 GHz
Radio protocol	IEEE 802.11b/g/n

### Control and connection

Connecting 1 interface per 1 Hydro unit
1 Hydro unit can be controlled by 5 user names
1 User can control up to 10 units of AC and ESTIA
All Hydro units can be divided up to 2 Space Heating Zones and 1 Domestic Hot Water (DHW)

### Features

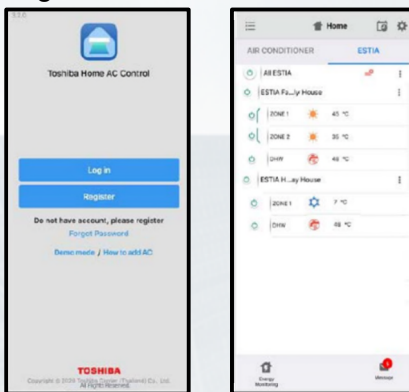
Detail Control	Display And Others
On/Off Control	Unit Operation Display
Operation Mode, Cool, Heat, Auto, Hot Water	Electrical Heater Operation Display (Heater of "Hydro Unit" and "Hot Water Tank Unit")
Leaving Water Temperature Setting for both Space Heating Zone 1 & Zone 2 and DHW	Hydro Unit's Pump Operation Display (Pump of "Hydro Unit" and "Additional")
Individual Weekly Schedule Setting	Boiler Operation Display
All ESTIA On/Off Control	THO Sensor Temperature Display (Outlet Water Temperature after Back-up Heater)
All ESTIA Weekly Schedule Setting	Water Temperature Sensor Display (TWO Sensor for Water Temperature Outlet after Heat Exchanger)
Night Set Back Setting	Auto Update.
Hot Water Booster Activation	Multi Language
Anti-Bacteria Activation	Signal Error Code
Frost Protect Activation for Holiday Period	

## 6. Application Control

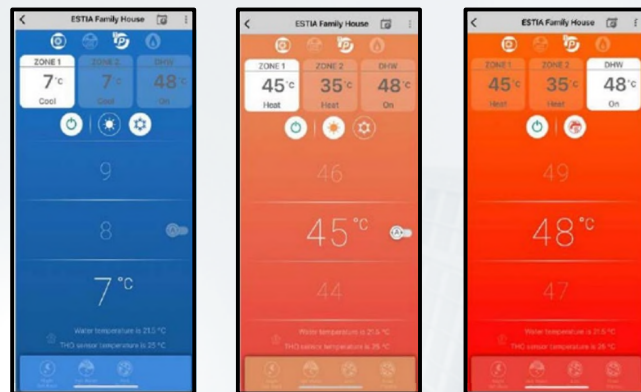
Users can download the mobile Application from the App Store or Google Play by searching the following name: "Toshiba Home AC Control"



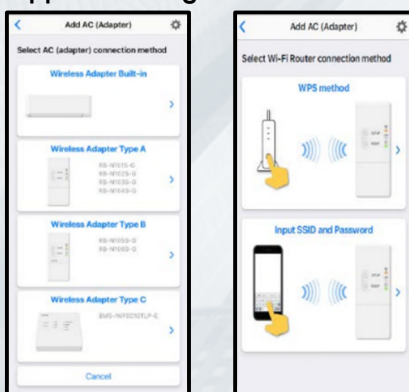
### Log in/Home



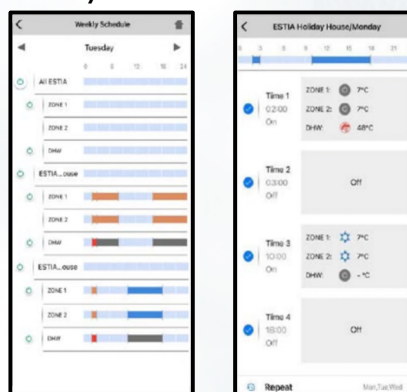
### Operation mode (Cool, Heat, Hot Water)



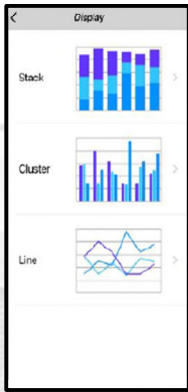
### Application Register Process



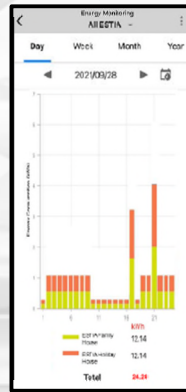
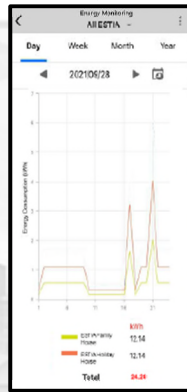
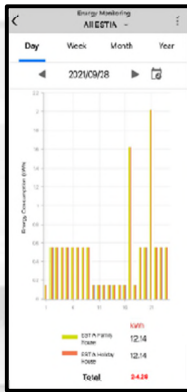
### Weekly Schedule



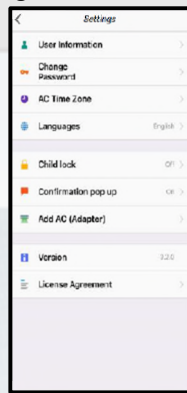
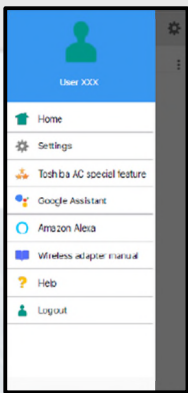
## Energy Monitoring



"User can select suitable Energy monitoring display for themselves"



## Menu/General Setting



For further information please contact our customer support team on [0870 843 0333](tel:0870 843 0333), your local representative, your supplier of **TOSHIBA** products or email any enquiries to- [general.enquiries@toshiba-ac.com](mailto:general.enquiries@toshiba-ac.com)